



PRESENTED BY



TUFF BUILT PRODUCTS

EXOSPHERE ANCHOR SYSTEMS



TELESCOPIC MOBILE ANCHOR POINTS

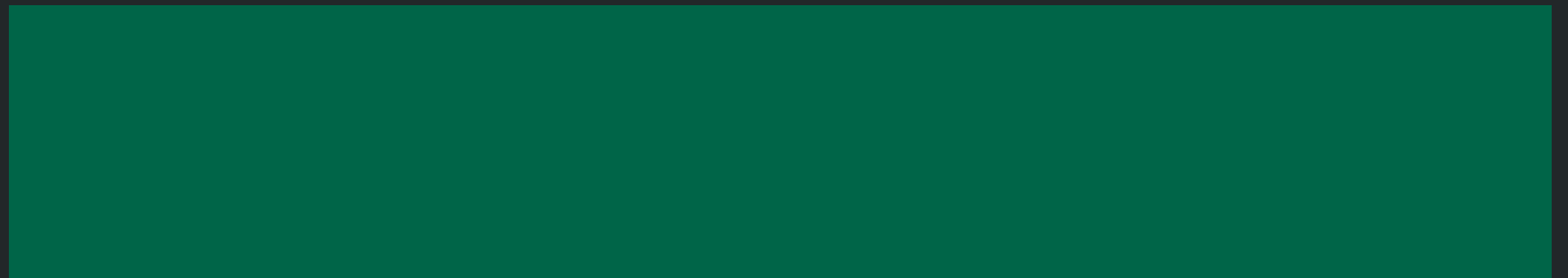


INTRODUCTION

Tuff Built Products is owned and operated by some of the world's most innovative contributors in the fall protection safety industry.

We are a leading designer of fall protection, confined space and access systems.

This presentation is dedicated to our Exosphere Anchor Systems which are telescopic mobile overhead fall protection anchor points that offer multiple types of specifications to best suit your application requirements.



KEY POINTS



VARIETY OF TELESCOPIC MASTS

FIXED OR FOLDABLE MAST OPTIONS

48" OR 72" ARMS (FOLDABLE ARMS FOR FOLDABLE MAST MODELS)

2-4 USER CAPABILITY (VARIES ANCHOR POINT HEIGHT & MODEL)

360 DEGREE ROTATIONAL HEAD WITH LOCKING PIN. 45 DEGREE MOVEMENT WHEN LOCKED

LEVELING INDICATORS

2 USER RESCUE CAPABILITY AVAILABLE



4X4 ALL TERRAIN

THE WORLD'S ONLY SELF PROPELLED ANCHOR POINT

PN 70764

42' MAXIMUM ANCHOR POINT HEIGHT

2 x 72" FOLDABLE ANCHOR ARMS

2 USER AT MAX HEIGHT OR LESS

3 USER AT 26' MAST HEIGHT OR LESS

4 USER AT 16' MAST HEIGHT ONLY

WIRELESS REMOTE CONTROLLED

SOLID RUBBER SKID STEER TIRES - NON MARKING AVAILABLE
FUEL TYPES : GASOLINE (PREMIUM) AND PROPANE (33 LB TANK)

STORAGE COMPARTMENT

EMERGENCY STOPS

HEAVY DUTY STEEL WELDED FRAME

WEIGHT - 7650 LBS





HIGHWAY TRAILER

PN 70726

- 42' MAXIMUM ANCHOR POINT HEIGHT
- 2 x 72" FOLDABLE ANCHOR ARMS
- 2 USER AT MAX HEIGHT OR LESS
- 3 USER AT 26' MAST HEIGHT OR LESS
- 4 USER AT 16' MAST HEIGHT ONLY
- FOUR (4) ELECTRIC BRAKES
- EMERGENCY BREAKAWAY KIT
- 12V HYDRAULIC CONTROLS
- TANDEM 6000 LB CAPACITY AXLES
- FULL SIZE SPARE TIRE
- D.O.T APPROVED LIGHTING
- NATM CERTIFIED
- POSTED HIGHWAY SPEED CERTIFIED
- HEAVY DUTY STEEL WELDED FRAME
- SOLAR PANEL
- WEIGHT - 6800 LBS



SIMPLICITY TRAILER

PN 70999



24' MAST
WINCH OPERATED
2 x 72" FIXED ANCHOR ARMS
MINIMAL SET UP TIME
WEIGHT - 5,600 LBS



4 LEVELING JACKS
SINGLE AXLE
TOWABLE
FULL SIZE SPARE TIRE
OFF-ROAD ONLY

SIMPLICITY LITE

PN 71447



24' MAST
WINCH OPERATED
2 x 72" FIXED OR FOLDABLE ANCHOR ARMS
FASTENS INTO CONCRETE
MINIMAL SET UP TIME
WEIGHT - 775 LBS



BASE OPTIONS



» FORKLIFT STABILIZER



PN 70546

FOR USE ON CONCRETE
BASE PLATE ADD-ON AVAILABLE FOR SOFT SURFACES
LEVELING KIT AVAILABLE

» INDOOR PUSH/PULL



PN 70661

FOR USE ON FINISHED FLOOR / EVEN CONCRETE
BUILT-IN LEVELING KIT

» OUTDOOR PUSH/PULL



PN 70497

FOR USE ON CONCRETE, GRAVEL AND HARD PACKED DIRT
BUILT-IN LEVELING KIT

LIFTING CAPABILITIES



»» MANUAL HYDRAULIC

»» 12V HYDRAULIC



VALVE, JOYSTICK AND BUTTON CONTROLS
FIXED AND FOLDABLE MAST



VALVE AND PUMP CONTROLS
FIXED AND FOLDABLE MAST

»» WINCH OPERATED



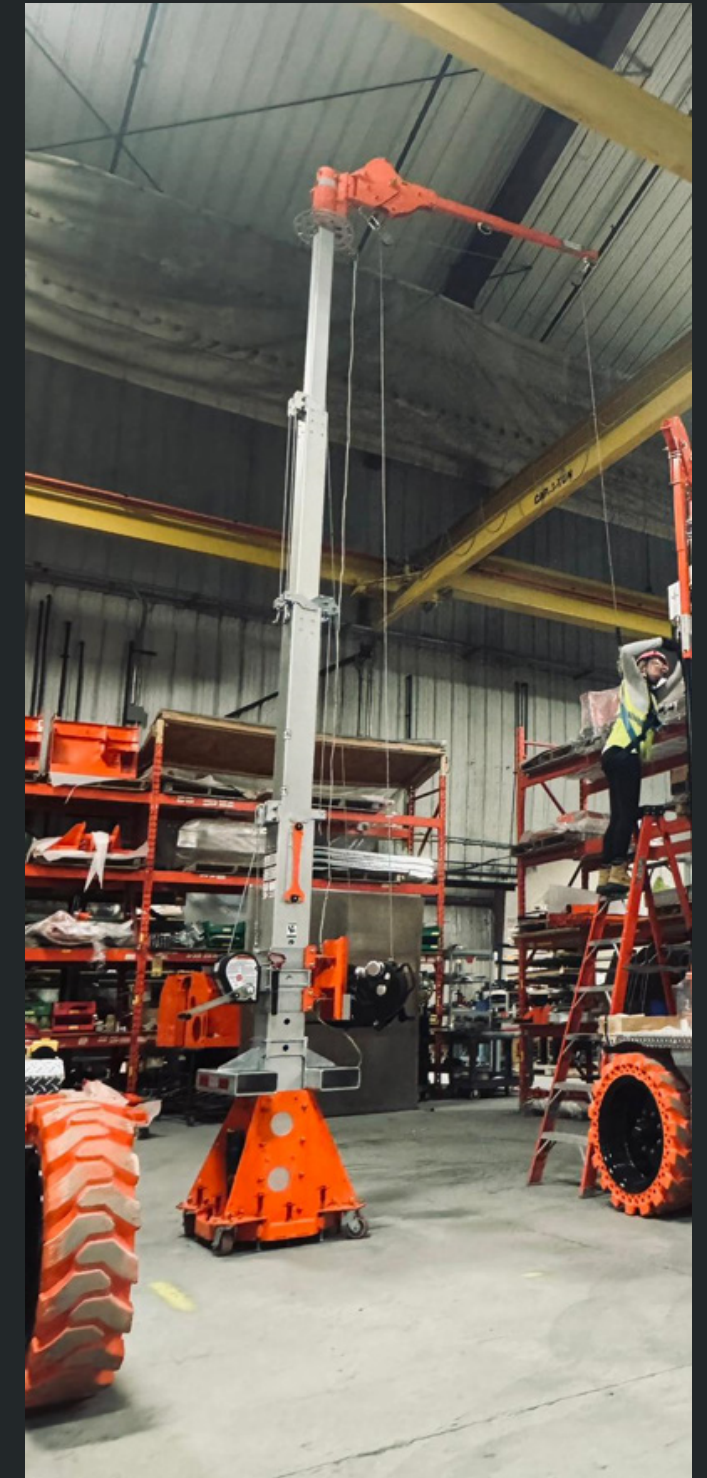
CRANK WINCH
24' MAXIMUM MAST HEIGHT
FIXED MAST ONLY

RESCUE KIT

PN 71210



The Rescue Kit add-on can be used on all Exosphere Anchor Systems. The rescue bracket bolts onto the bottom of mast. The cable from the SRL-R follows the mast vertically along the arm through pulleys. Rescue kit can be used for confined spaces up to 80' below ground surface using a 130' SRL-R.





LED LIGHT ATTACHMENT

PN 71309



**220,000 LUMENS
LIGHTWEIGHT - 19 LBS
360 DEGREE ILLUMINATION AREA
WATERTIGHT
WEATHERPROOF
6 MANUAL MOVABLE LIGHT PANELS
NO VENTILATOR**





THANK YOU

INFO@NSAFE.COM

1.800.815.2523

905.339.3014

